

Company Profile

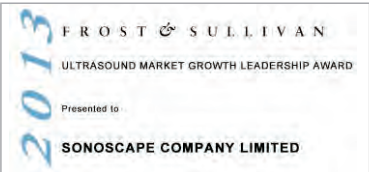
Since its establishment, SonoScape has been committed to providing high quality medical equipment for the healthcare sector. SonoScape specializes in the development and production of diagnostic ultrasound solutions. By introducing advanced imaging techniques, SonoScape has improved diagnostic accuracy and therefore enabled better health outcomes. Since 2002, SonoScape has reached and benefited millions of people. With the world in mind, SonoScape will continue providing more effective and accessible healthcare solutions, through persistent innovation and passion for life.

Quote from the Analyst of

“The Frost & Sullivan Award for Growth Leadership is presented to the company that has demonstrated excellence in capturing the highest annual compound growth rate for the last 3 years...The sales of ultrasound devices contribute an overwhelming proportion of total revenue, helping the company strengthen its leading position to outperform the competitors in the marketplace. With increasing penetration of mid-to high-end ultrasound devices, SonoScape is expected to see significant growth potential in the future... ”

Company Milestone

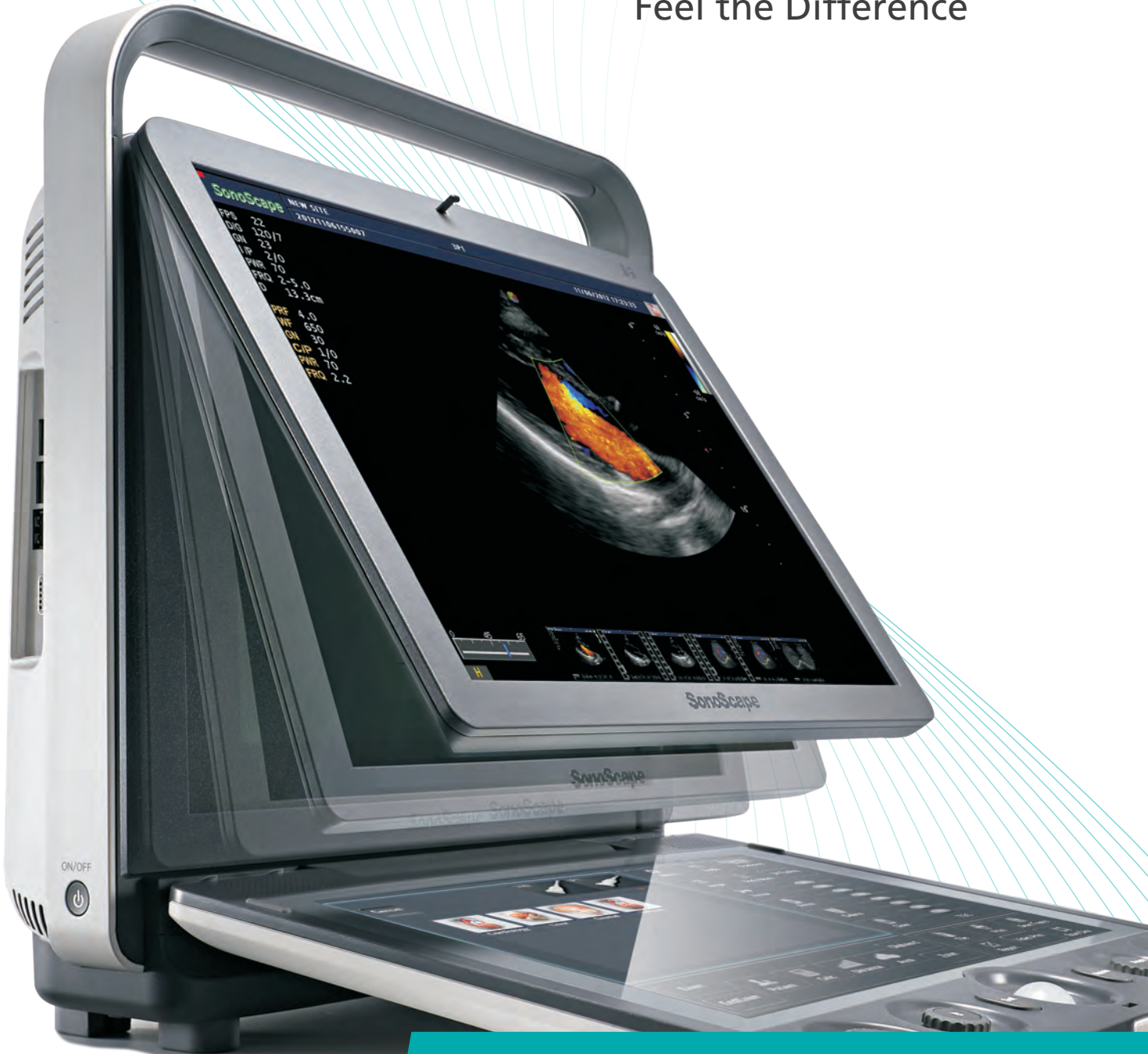
- 2002: Company Founded in Shenzhen, China
- 2003: Released SSI-1000: the 1st 15" Portable Color Doppler system in China
- 2004: Released SSI-2000: the 1st PC platform Color Doppler system in China
- 2005: Received the “High Technology Company” award from the PRC government
- 2007: Received "CHINA TOP BRAND" award in the Medical Equipment Industry
- 2007: Released the 1st Real time 4D ultrasound system in China
- 2008: Received "European Entrepreneurial Company 2008" award from FROST & SULLIVAN
- 2008: Received "Flagship Company" award in the Medical Equipment Industry in China
- 2009: Received "Product Quality Leadership Award 2009" from FROST & SULLIVAN
- 2011: Received the Reddot 2011 Product Design Award for S20 in Essen, Germany
- 2013: Received "Ultrasound Market Growth Leadership Award, 2013" from FROST & SULLIVAN



Yizhe Building, Yuquan Road, Shenzhen, 518051, China
Tel: 86-755-26722890 Fax: 86-755-26722850
E-mail: market@sonoscape.net www.sonoscape.com

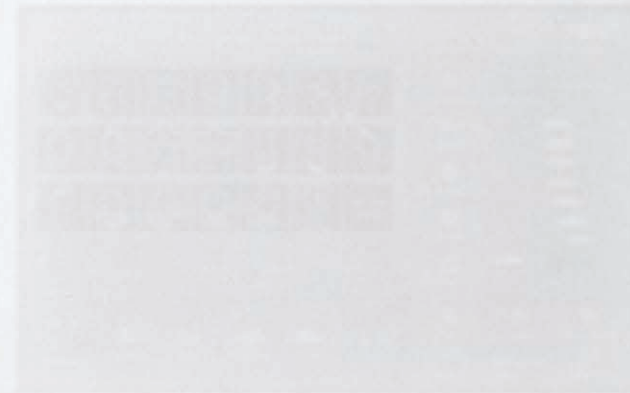


Feel the Difference



Caring for Life through Innovation

Since releasing its first portable color Doppler ultrasound system, SonoScape has dedicated itself to the ultrasound field. From this dedication a great deal of ultrasound technologies especially in hand-carried systems has emerged. With focused efforts, S9 is released as a powerful and versatile imaging platform with futuristic design. Compact yet featuring comprehensive applications for cardiology, radiology, abdomen, obstetrics, gynecology, small parts and urology, S9 provides you the best solution for ultrasound imaging with outstanding performance.



Powerful

Smart

Stylish

Feel the Difference **S9**



Powerful

A Multi-function Power Platform with Innovation

The S9 is embedded with SonoScape's core imaging technologies, which has significantly elevated the imaging quality to a new level and revealed more diagnostic information to the clinician. Working with S9, you can see more clearly, diagnose more confidently and work more comfortably.

Spatial Compound Imaging

Spatial Compound Imaging utilizes several lines of sight for optimal contrast resolution, speckle reduction and border detection, with which S9 is ideal for superficial and abdominal imaging with better clarity and improved continuity of structures.

Pulse Inversion Harmonic Imaging

The harmonic signals are fully preserved without degradation of the acoustic information, which makes it possible for S9 to image high-level details and improve contrast resolution by reducing noise and clutter in the visualization of subtle lesions, small parts, vascular and so on.

C-Xlasto elastography

SonoScape provides S9 with a new method to support the physician in assessing tissue elasticity. The differences in tissue response are detected and visualized in real-time by the elastography algorithms through different graphical representations, which can be particularly helpful in analyzing breast, thyroid and musculoskeletal structures.

Stress Echo

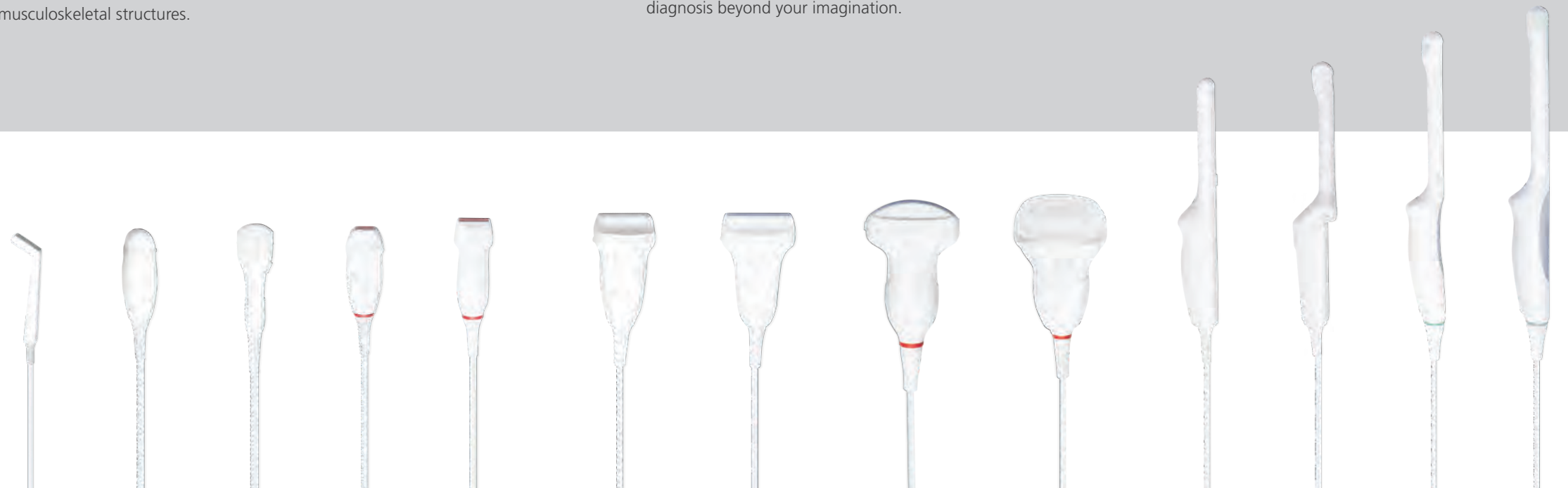
Stress echo is the combination of 2D echocardiography with a physical or pharmacological stress, which can determine how the heart muscles respond to stress and mainly used to diagnose and evaluate coronary artery disease. S9 stress echo package with fully integrated and easily programmable interface can customize your needs and all features help deliver streamlined workflow for wall motion scoring and reporting.

Real-time 3D (4D)

With increased physical channels and a new platform, the S9 offers both image quality and frame rates to meet a new standard of SonoScape S series. Thanks to high frame rate and advanced technologies, the 4D imaging of S9 delivers smooth movement of fetus and offer comprehensive 4D acquisition, data rendering, and post-processing functionality.

High Density Probe

S9 is equipped with high density phased array probe to meet the needs of both high frame rate and premium resolution in the cardiac imaging. Thanks to the high sensitivity of the color Doppler mapping of SonoScape, S9 provides accurate cardiac diagnosis beyond your imagination.



Smart

Perform Your Operation, Feel the Difference

SonoScape aims to design medical equipment which has incorporated state-of-the-art technologies combining with the optimal workflow. The full-sized touch panel of S9 surpasses the hardware limitation of the traditional keyboard, which enriches the possibility of easier operation.

Using S9, you will get faster operation on a variety of applications, including the most difficult diagnostic tasks. View these programs below, and be inspired to boost your productivity.



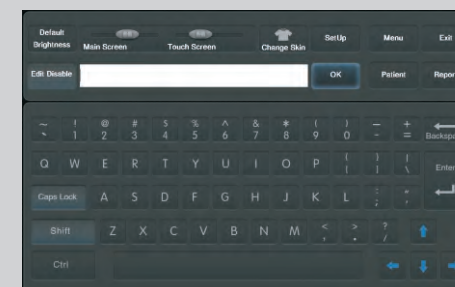
Intuitive Graphic Icon

Guides operators into the exam mode with a single touch



Convenient Adjustment

All parameters can be adjusted easily by pressing the smart touch screen



Virtual Alphabet Keyboard

Ensure patient information and doctor comments to be input in the easiest way



Specific Application Packages

Measurement items, body marks and annotations are classified in terms of different applications



Stylish

Take Your Premium Performance Anywhere

SonoScape's S9 offers the highest standard of ergonomics and delivers you the latest technological innovations with highly-integrated chip sets, which enables excellent portability and flexibility. Incorporated an intelligent and style-changeable smart touch screen, S9 has set a new standard for ultrasound scanning, which will bring you unprecedented ease-of-use.



50° Foldable 15" LCD Display
Graphical User Interface Touch Screen



140° Opening Angle
Abundant Connection Interface



Stylish Trolley with Adjustable Height



Sturdy Suitcase in Low-pitched
Luxurious Style

